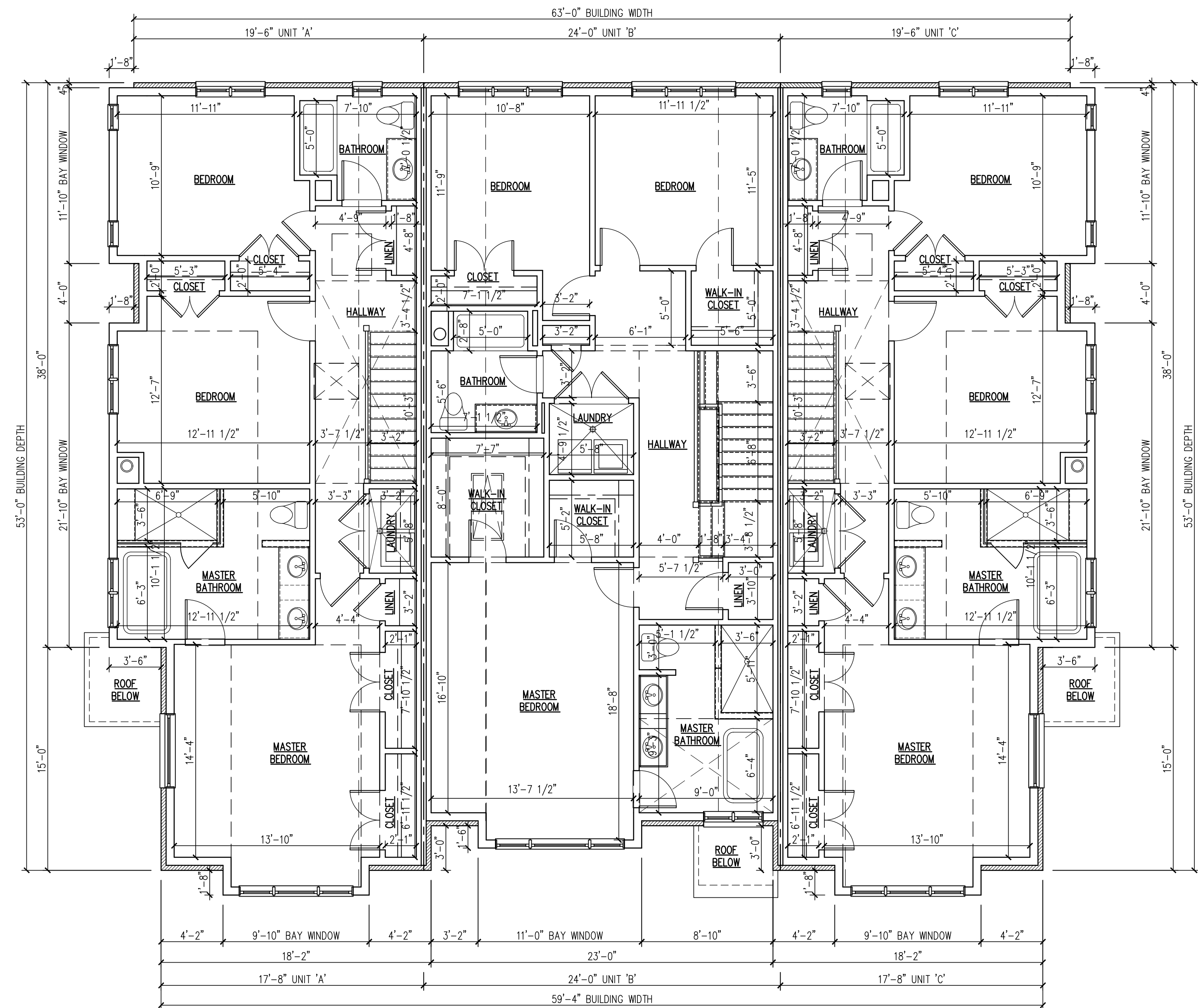


FIRST FLOOR PLAN 3,349 SQUARE FEET
SCALE: 3/16" = 1'-0"



SECOND FLOOR PLAN 3,376 SQUARE FEET
SCALE: 3/16" = 1'-0"

THE BOROUGH OF PALISADES PARK ZONING BOARD OF ADJUST. APPROVED THIS PLAN BY MEMORIALIZING RESOLUTION AT ITS REGULAR MEETING ON _____ PLEASE SEE AFFIXED RESOLUTION FOR ANY ADDITIONAL CONDITIONS OF APPROVAL SET BY THE BOARD

BOARD ENGINEER _____ DATE _____
BOARD SECRETARY _____ DATE _____
BOARD CHAIRPERSON _____ DATE _____

V.C.A. GROUP
VASSILIOS COCOROS ARCHITECT
V.C.A.GROUP, LLC
467 SYLVAN AVENUE
LOWER LEVEL
ENGLEWOOD CLIFFS, NEW JERSEY
TEL. 201.541.6595
FAX. 201.541.6596

Date	Item
05/11/20	FOR ZONING BOARD

PROJECT:
Proposed New:
Three Unit Dwelling
Located at:
**265 Fourth Street
Palisades Park, New Jersey
Block: 318 Lot: 12
AA Zone**

Architect shall not be responsible for the means & methods of construction and or site maintenance & safety

DRAWING TITLE: FLOOR PLANS		
SCALE:	AS NTD.	DATE: 4/30/20
DESIGNED BY:	VC	PROJECT#: JCo1-18-05
DRAWN BY:	VC	CAD FILE:
CHECKED BY:	VC	DRAWING #:
PROFESSIONAL SEAL:	DRAWING:	
VASSILIOS COCOROS, RA N.J. LIC. # AI 13644		SHEET #: 3 OF 5

A3

COPYRIGHT © 2017, VASSILIOS COCOROS ARCHITECT - ALL RIGHTS RESERVED. THE COPYING OR REUSE OF THIS DOCUMENT OR PORTIONS THERE OF FOR OTHER THAN THE ORIGINAL PROJECT OR THE PURPOSE ORIGINALLY INTENDED WITHOUT WRITTEN PERMISSION OF VASSILIOS COCOROS ARCHITECT IS PROHIBITED.