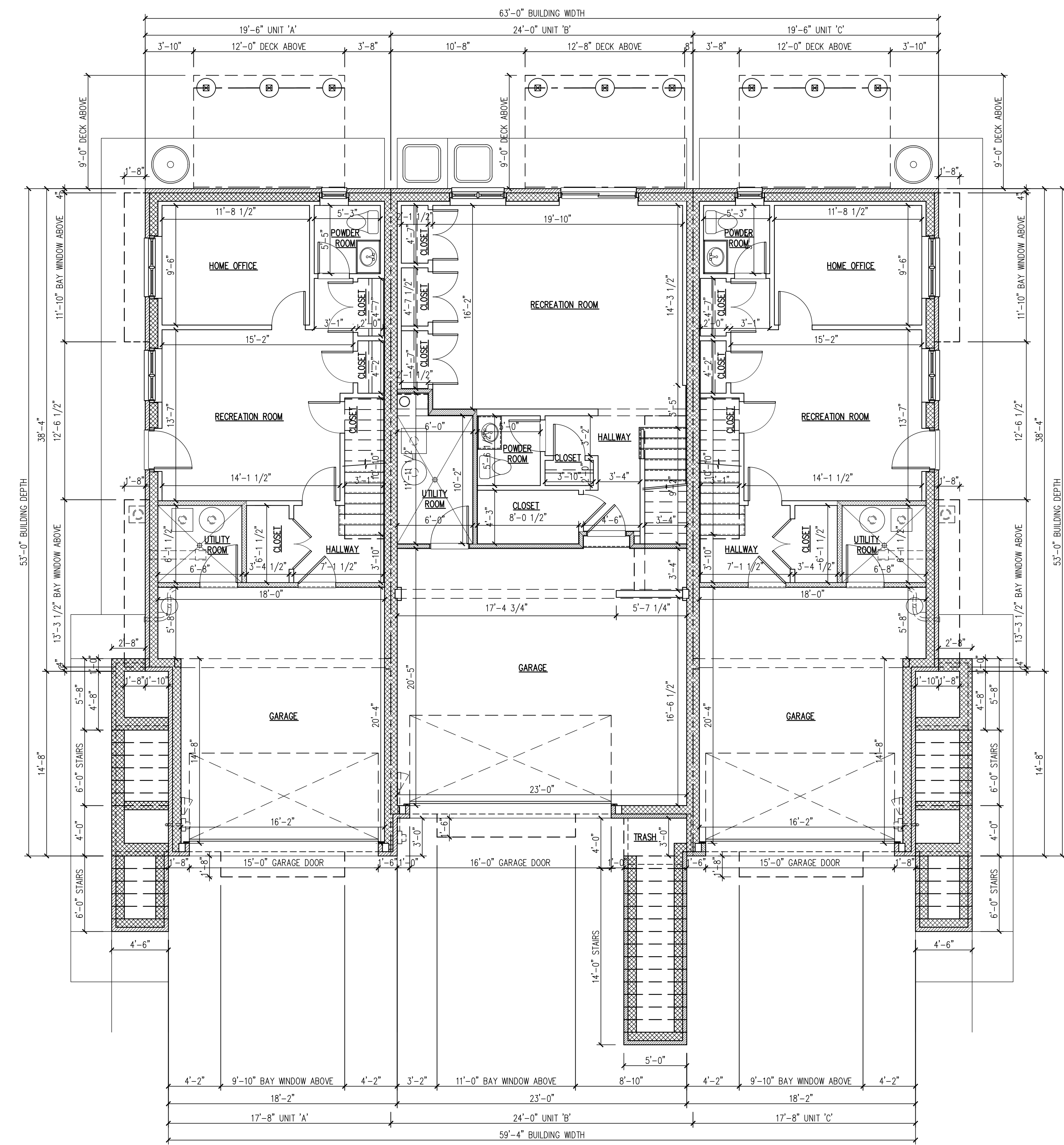




**REAR ELEVATION**  
SCALE: 3/16" = 1'-0"



**BASEMENT PLAN** 3,216 SQUARE FEET  
SCALE: 3/16" = 1'-0"

Architect shall not be responsible for the means & methods of construction and or site maintenance & safety

THE BOROUGH OF PALISADES PARK ZONING BOARD OF ADJUST. APPROVED THIS PLAN BY MEMORIALIZING RESOLUTION AT ITS REGULAR MEETING ON \_\_\_\_\_ PLEASE SEE AFFIXED RESOLUTION FOR ANY ADDITIONAL CONDITIONS OF APPROVAL SET BY THE BOARD

BOARD ENGINEER \_\_\_\_\_ DATE \_\_\_\_\_  
BOARD SECRETARY \_\_\_\_\_ DATE \_\_\_\_\_  
BOARD CHAIRPERSON \_\_\_\_\_ DATE \_\_\_\_\_

**V.C.A. GROUP**  
VASSILIOS COCOROS ARCHITECT  
V.C.A.GROUP, LLC  
467 SYLVAN AVENUE  
ENGLEWOOD CLIFFS, NEW JERSEY  
TEL. 201.541.6595  
FAX. 201.541.6596

Date	Item
05/11/20	FOR ZONING BOARD

**PROJECT:**  
Proposed New:  
**Three Unit Dwelling**  
Located at:  
**265 Fourth Street  
Palisades Park, New Jersey  
Block: 318 Lot: 12  
AA Zone**

DRAWING TITLE: ELEVATIONS AND BASEMENT			
SCALE:	AS NTD.	DATE:	4/30/20
DESIGNED BY:	VC	PROJECT#:	Jc0t-18-05
DRAWN BY:	VC	CAD FILE:	
CHECKED BY:	VC	DRAWING #:	
PROFESSIONAL SEAL:		DRAWING:	A2
VASSILIOS COCOROS, RA N.J. LISC. # AI 13644		SHEET #:	2 OF 5

COPYRIGHT © 2017, VASSILIOS COCOROS ARCHITECT - ALL RIGHTS RESERVED. THE COPYING OR REUSE OF THIS DOCUMENT OR PORTIONS THERE OF FOR OTHER THAN THE ORIGINAL PROJECT OR THE PURPOSE ORIGINALLY INTENDED WITHOUT WRITTEN PERMISSION OF VASSILIOS COCOROS ARCHITECT IS PROHIBITED.